



State of West Virginia  
 Expression of Interest  
 Architect/Engr

Procurement Folder : 464302

Document Description : Addendum No.1 - A/E Svcs - Structural Repairs at State Parks

Procurement Type : Agency Contract - Fixed Amt

Date Issued	Solicitation Closes	Solicitation No	Version	Phase
2018-07-25	2018-08-02 13:30:00	AEOI 0310 DNR180000009	2	Draft

SUBMIT RESPONSES TO:	VENDOR
BID RESPONSE DIVISION OF NATURAL RESOURCES PROPERTY & PROCUREMENT OFFICE 324 4TH AVE SOUTH CHARLESTON WV 25303-1228 US	Vendor Name, Address and Telephone  CDI-Infrastructure, LLC dba L.R. Kimball 615 West Highland Avenue Ebensburg, PA 15931 814-419-7898

**FOR INFORMATION CONTACT THE BUYER**

Angela W Negley  
 (304) 558-3397  
 angela.w.negley@wv.gov

Signature X

FEIN # 27-2620523

DATE July 31, 2018

All offers subject to all terms and conditions contained in this solicitation



State of West Virginia  
 Expression of Interest  
 Architect/Engr

Procurement Folder : 464302

Document Description : Addendum No.1 - A/E Svcs - Structural Repairs at State Parks

Procurement Type : Agency Contract - Fixed Amt

Date Issued	Solicitation Closes	Solicitation No			Version	Phase
2018-07-25	2018-08-02 13:30:00	AEOI	0310	DNR1800000009	2	Final

SUBMIT RESPONSES TO:	VENDOR
BID RESPONSE DIVISION OF NATURAL RESOURCES PROPERTY & PROCUREMENT OFFICE 324 4TH AVE SOUTH CHARLESTON WV 25303-1228 US	<b>Vendor Name, Address and Telephone</b> CDI-Infrastructure, LLC dba L.R. Kimball 615 West Highland Avenue Ebensburg, PA 15931 814-419-7898

**FOR INFORMATION CONTACT THE BUYER**  
 Angela W Negley  
 (304) 558-3397  
 angela.w.negley@wv.gov

Signature X  FEIN # 27-2620523 DATE July 31, 2018

# CONTENTS

COVER LETTER

SECTION I	QUALIFICATIONS AND EXPERIENCE
	<ul style="list-style-type: none"><li>• CDI / L.R. KIMBALL Company Profile</li><li>• Consultant Company Profiles</li><li>• Relevant Project Experience</li><li>• Organization Chart &amp; Key Personnel Resumes</li><li>• Copies of Licenses / Certifications</li></ul>
SECTION II	APPROACH AND METHODOLOGY
SECTION III	ADDITIONAL INFORMATION / FORMS



August 2, 2018

Ms. Angela White Negley  
West Virginia Division of Natural Resources  
Property and Procurement Office  
BID RESPONSE  
324 4th Avenue, South Charleston, WV 25303

RE: Response to Request for A/E Services for Structural Repairs at Various State Parks,  
Solicitation No. AE01 DNR 18\*09

Dear Ms. Negley,

On behalf of CDI-Infrastructure, LLC dba L.R. Kimball (CDI / L.R. Kimball), we are pleased to submit our qualifications to provide A/E services for the West Virginia Division of Natural Resources for Structural Repairs at Hawk's Nest, Pipestem Resort and Twin Falls State Parks.

CDI / L.R. Kimball distinguishes itself in the industry by having all building engineering and architectural services in-house. As a full-service firm, our integrated design team has the extensive experience and leadership required and we are accustomed to working collectively on the unique challenges that a structural repair project may present. We offer the following for your consideration:

#### TEAM OFFICES

CHARLESTON  
500 CORPORATE LANDING,  
SUITE 200,  
CHARLESTON, WV 25311  
T 304.746.3500


CONTACTS:  
WESLEY HEVENER, PE  
T 304.746.3565  
E wesley.hevener@cdicorp.com

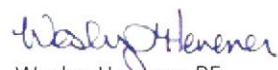
GARY J. LAPERA, FAIA  
T 609.510.7772  
E gary.lapera@cdicorp.com

- Our team is experienced in the complete design and detailing of structural systems including steel frames, concrete frames, masonry bearing systems, wood construction, and foundation systems. We have completed structural investigation and repair/strengthening projects on various types of structures including steel, concrete, masonry and wood construction. Our structural repair experience has involved historic structures, as we've highlighted in our attached qualifications. In addition, we have included two specialty consultants to add even more depth to our team to provide Wood Science and Historic Preservation services.
- Our team regularly and successfully works with a variety of government agencies such as yours, on projects of all types and sizes. Of special note, our company has been involved in over 1,200 projects across West Virginia over the past 40 years.
- Our team is more than capable of providing services efficiently and cost effectively on projects regardless of scope or scale. We view this type of contract as an extension of our client's team and can provide immediate and nimble staffing to suit your immediate needs. Our highly integrated project team understands the complexity of delivering projects across a vast system while maintaining overall DNR goals.
- We understand the challenges of maintaining your physical assets, preserving the extraordinary beauty of the West Virginia landscape, and most importantly creating a DNR park system that is ecologically and economically viable. The CDI / L.R. Kimball team will be both partners and stewards in the process.

We invite your thorough review of our qualifications and look forward to future conversations.

With Kind Regards,

  
Gary J. Lapera, FAIA  
Vice President  
CDI-Infrastructure, LLC dba L.R. Kimball

  
Wesley Hevener, PE  
Project Executive / Transportation Practice Leader & PM  
CDI-Infrastructure, LLC dba L.R. Kimball

GJL/rms



**Extraordinary outcomes are the result of exceptional people.**



**SECTION I - QUALIFICATIONS/EXPERIENCE**

# **CDI / L.R. Kimball Company Profile**

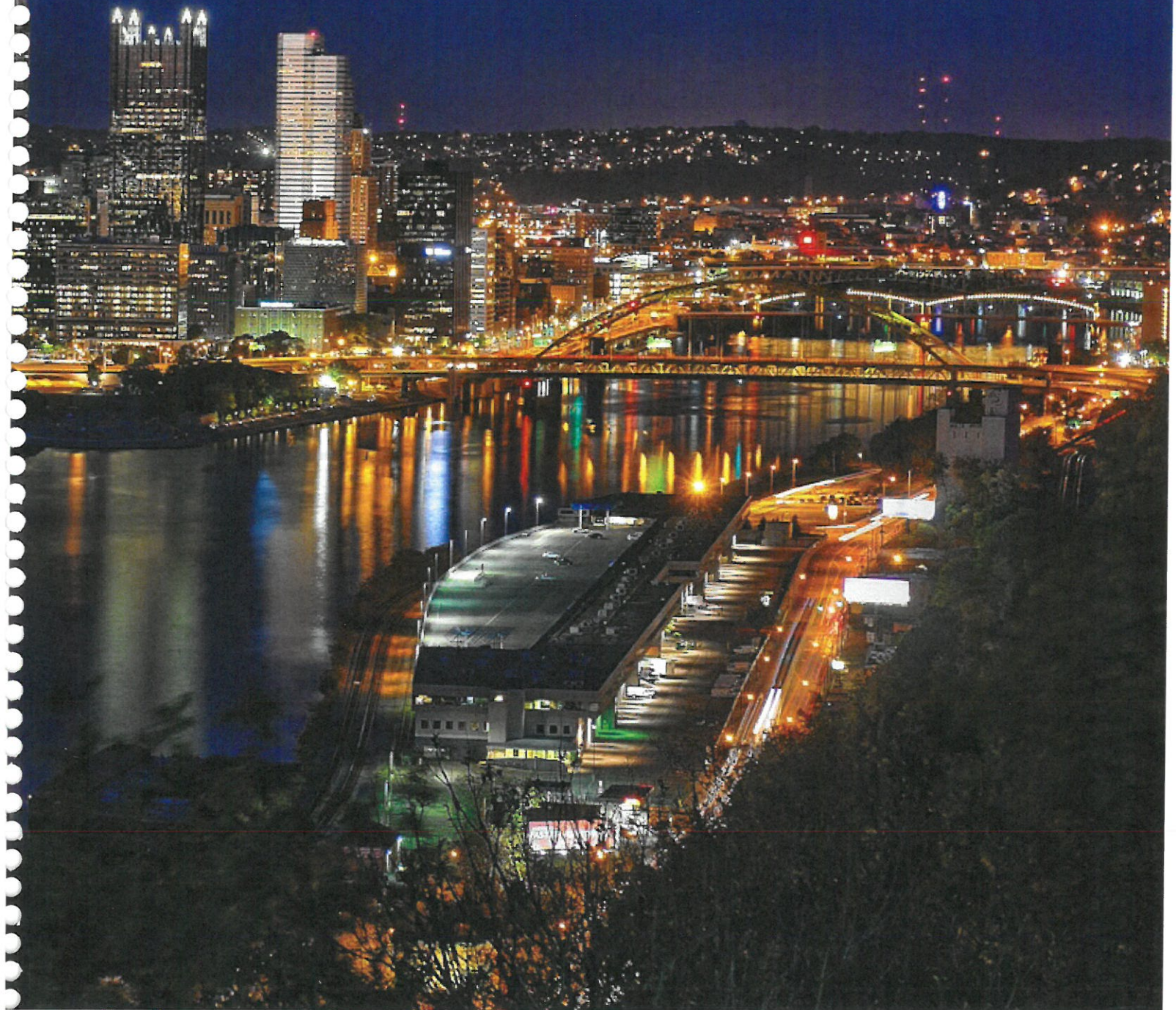
Founded more than a half-century ago, CDI / L.R. Kimball is recognized as one of the nation's leading architecture and engineering firms offering multi-disciplinary service to a diverse range of public and private-sector clients.

CDI / L.R. Kimball is headquartered in Pennsylvania with additional offices in West Virginia, Texas, New Jersey, and Louisiana.

Infrastructure touches every aspect of our lives - the schools where our children learn; the offices and factories where we work; the bridges, highways, and airports that connect our communities; the water treatment plants and stormwater facilities that keep our families safe - all are critical elements that enhance our quality of life.

At CDI / L.R. Kimball, we guide you from concept design through project completion. But through it all, one thing is consistent: our commitment to quality and safety.

CDI / L.R. Kimball: Creating infrastructure that builds community.



## Architecture & Engineering



- Architecture
- Master Planning
- Urban Design
- Building Design
- Interior Design
- Sustainable Design
- Facility Assessments

- Facilities Engineering
  - Mechanical
  - Electrical
  - Structural
  - Fire Protection
- 

## Civil Engineering



- Stormwater Facilities
- Wastewater Engineering
- Brownfield Development
- Dams and Waterways
- Erosion Control

- Solid Waste Consulting
  - Demolition Consulting
  - Land Development
  - Railroad Sidings
  - Water Resources
- 

## Highways, Bridges, Environmental & Traffic



- Land Use / Zoning Permit Reviews
- Hazardous Waste Investigations
- Design / Build Bridge Engineering
- Traffic Impact Studies (TIS) and Traffic Impact Assessment (TIA)

- Corridor Access Management Studies
  - Wildlife Habitat Evaluations
  - Erosion and Sediment Pollution Control / NPDE
  - Certified Bridge Safety Inspectors (CBSI)
- 

## Airports



- Design
- Management
- Operations
- Business Planning
- Wildlife Hazard Assessment

- Airfield Obstruction Analysis
  - Airfield and Landside Design
  - Navigational Aid Coordination
  - Hangar Building Design
- 

## Geosciences



- Geotechnical
- Stockpile
- Drilling
- Material Testing

- Geosciences
- Survey
- Mapping
- Photogrammetry



# Building relationships one project at a time with expertise you can depend on.

For over 65 years, we have advocated for our clients and built enduring relationships focused on helping each client achieve their goals.

CDI / L.R. Kimball has been successful across a wide variety of businesses including public and private organizations; federal, state and local government agencies; as well as private industry organizations in the following sectors:

- Highways, Bridges, Environmental & Traffic
- Commercial / Industrial
- Education
- Sports & Recreation
- Corrections / Justice
- Government
- Civil Engineering
- Geosciences
- Water Resources

We work collaboratively with clients and embrace a “one team” attitude that helps us anticipate and resolve project opportunities and challenges. And we pride ourselves on delivering those solutions on time and on budget.

Our client-focused project approach has helped us build our reputation as a thought leader in architecture and engineering.

Every project is grounded by a core team that guides our clients through each project phase. As with any endeavor, seasoned leadership is crucial to success. At CDI / L.R. Kimball, our Market Segment Leaders and Project Managers are the linchpins to our success.

Our senior leadership is our client’s greatest advocate as well as dedicated stewards of their resources. This highly regarded group of professionals is the reason that many of our clients have been with us for decades.



West Virginia Department of Highways  
I-470 Approach Bridge Rehabilitation  
City of Wheeling, Ohio County, WV



Pennsylvania Turnpike Commission  
Mon/Fayette Expressway  
Pennsylvania



PennDOT, District 9-0  
Pemberton Bridge Rehab  
Warriors Mark Township, PA



Johnstown Galleria Interchange  
Johnstown, PA



Rapid Bridge Replacement P3 Project  
12 Bridge replacements across Districts  
11-0, 12-0, 10-0, 2-0, 9-0, 8-0, and 6-0

“ The CDI / L.R. Kimball team did an excellent job providing design plans, bid documents, securing permits and overseeing construction. This project was funded in part by PennDOT and the County, and **CDI / L.R. Kimball clearly demonstrated their thorough understanding of the PennDOT process.**”

**Brett Hollern**  
Trail Manager  
County of Somerset, PA



*Pittsburgh International Airport - Various Projects  
Pittsburgh, PA  
Photo Credit - Pittsburgh International Airport*



*Williamsport Municipal Airport Authority  
Runway 9-27 Approach Improvements & Rehabilitation  
Williamsport Regional Airport, Montoursville, PA*



*Bi-County Airport Luzerne & Lackawanna Counties  
Taxiway B Extension to Runway 22  
Wilkes-Barre/Scranton International Airport, Moosic, PA*



*Central West Virginia Regional Airport Authority  
Taxiway Rehabilitation  
Yeager Airport, Charleston, WV*



*US Airways  
Operations Control Center  
Pittsburgh, PA*

“ Providing quality, cost effective engineering services and delivering projects on-time for Williamsport Regional Airport has been the hallmark of CDI / L.R. Kimball's activities. **Sound advice, a realistic approach to future planning, combined with viable and creative solutions** to difficult problems, have made Kimball's truly an essential partner in the success we enjoy today. ”

**Thomas J. Hart**

**Executive Director**

**Williamsport Regional Airport, Williamsport, PA**



City of Williamsport, PA  
Trade & Transit Intermodal Center II  
Williamsport, PA



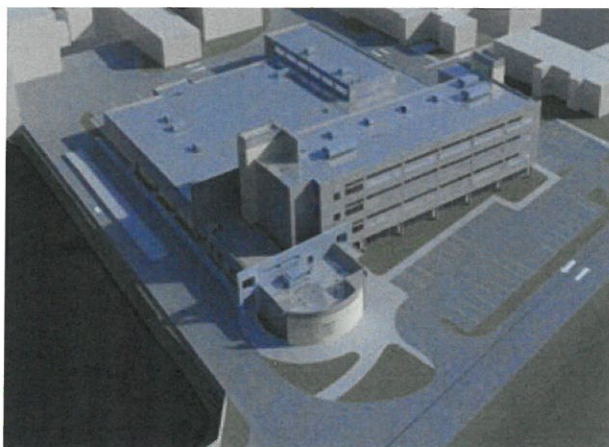
Hyatt Hotel at the Pittsburgh International Airport  
Dauphin County General Authority  
Pittsburgh, PA



Windber Research Institute  
Laboratory and Multi-Tenant Office Building  
Windber, PA



ORX Railway Corporation  
Business & Manufacturing Addition  
Tipton, PA



Allegheny County Sanitary Authority  
New Operations & Maintenance Facility  
Pittsburgh, PA

“ The design of the building and its functionality are everything I hoped they would be, and I am a very, very, very particular person. **Everything about its design is just perfect. The architecture itself is a work of art.** It is with the very highest rating that I unconditionally recommend them for any such project. Just one warning though, L.R. Kimball gets things done with lightning speed. ”

**Glenn Brandimarte**

**President ORX Railway Corporation, Tipton, PA**



Middlesex County College  
New South Hall Science Building  
Edison, NJ



Westmoreland County Community College  
New Latrobe Education Center  
Latrobe, PA



The Pennsylvania State University  
New Engineering Research Center  
University Park Campus, State College, PA



Richland School District  
New Junior/Senior High School  
Johnstown, PA



New Central York High School  
York, PA

“It has been a pleasure working with the CDI/L.R. Kimball staff. I believe **their expertise and excellent service led to a successful partnership and an outstanding facility** for our students, faculty, and community.”

**Chris M. DeVivo**  
Superintendent of Schools  
Armstrong School District



California University of Pennsylvania  
New Convocation Center  
California, PA



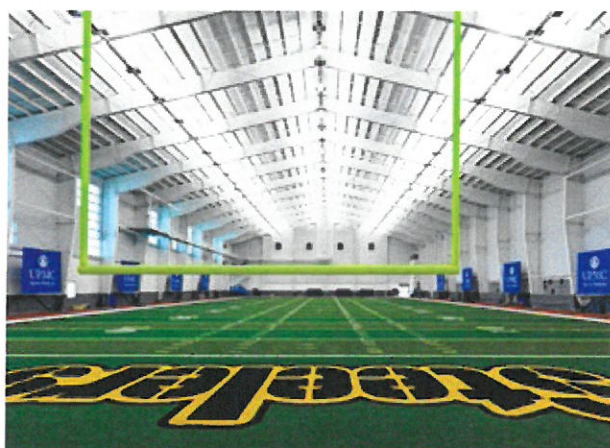
Family Circle Tennis Facility  
Charleston, SC



The Pennsylvania State University  
Rec Hall Wrestling & Student Fitness Center  
University Park Campus, State College, PA



The Pennsylvania State University  
Medlar Field at Lubrano Park  
University Park Campus, State College, PA



Oxford Development Company  
Artificial Turf Replacement for the Pittsburgh Steelers/  
University of Pittsburgh Football Field at UPMC Sports  
Performance Complex  
Pittsburgh, PA

“ From the beginning, CDI / L.R. Kimball was a valuable member of the project team and played a key role in the overall success of the project. **Your staff of dedicated and experienced professionals performed admirably on the project and is to be commended for the numerous challenges they were able to successfully resolve for a project of this scope and complexity.** ”

**Marv Bevan, Jr., PE RA**

**Project Manager, Design & Construction Division  
The Pennsylvania State University**



Blair County, PA  
Courthouse Renovations/Additions  
Hollidaysburg, PA



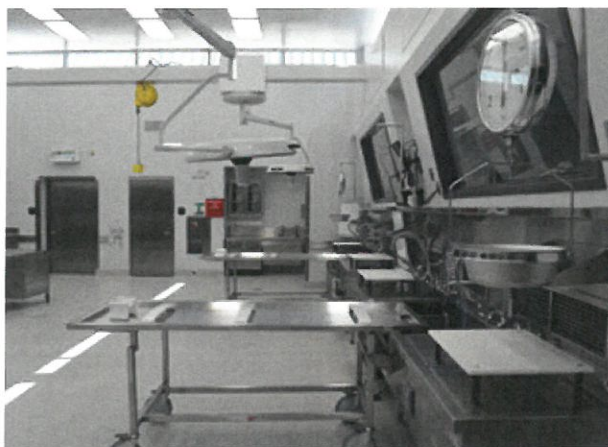
Howard County, MD  
New Detention Center  
Jessup, MD



Centre County, PA  
New Centre County Correctional Facility  
Bellefonte, PA



Chatham County, GA  
Detention Center Campus Upgrades  
Savannah, GA



Lancaster County, PA  
New Forensic Center and Laboratory  
Lancaster, PA

“ CDI / L.R. Kimball is a great A/E firm to have on board - **professional, very responsive to the Owner's needs, and especially conscious of budget.** We've retained them for the second phase of the project - that speaks for itself. ”

**Parveez Yousuf**  
Senior Construction Project Manager  
Chatham County Department of Engineering



Borough of State College  
New Municipal Building  
State College, PA



York County, PA  
Emergency Services / 911 Center  
York, PA



Southeast PA Regional Task Force and the  
City of Philadelphia, Delaware Valley Intelligence Center  
Philadelphia, PA



Clayton G. Graham Public Safety Building  
Atlantic City, NJ



United States Coast Guard  
New Rescue Swimmer Training Facility (Design/Build)  
Elizabeth City, NC

“ The PA Department of General Services and the PADMVA have developed trust and confidence in L.R. Kimball. **Working with this team was truly a beneficial partnership.** We would highly recommend them to any agency considering a building project or restoration.”

**Andrew J DeGregorio,  
EIT LTC (RET), EN, PAARNG**

**Former Director  
Bureau of Military Construction & Engineering  
Construction & Facilities Management Officer  
Office of Facilities and Engineering  
PA Department of Military and Veterans' Affairs**





*Ebensburg Municipal Authority  
Ebensburg WWTP Upgrade  
Cambria County, PA*



*Shawville Power Plant  
Ash Disposal Site  
Clearfield, PA*



*Competitive Power Ventures (CPV)  
CPV Fairview Energy Center  
Vinco, Jackson Township, Cambria County, PA*



*Horizon Properties  
Southpointe II Development  
Washington County, PA*



*Demolition of Three Rivers Stadium  
& Engineering Services for Heinz Field  
Pittsburgh, PA*

“ We have been very happy with their work and would like to express our satisfaction with the services of L.R. Kimball. **We highly recommend them.**”

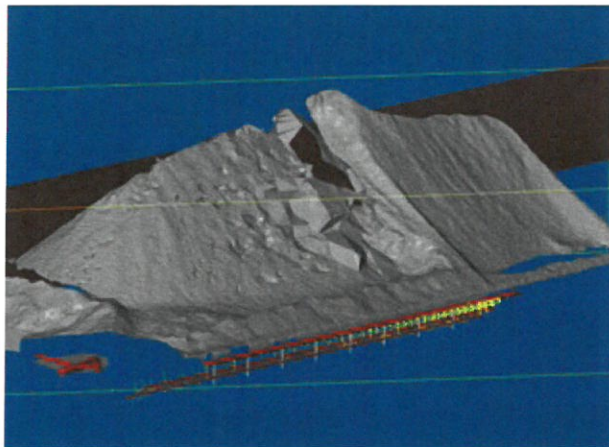
**Richard McNulty**  
Council President, Borough of Franklin



HRI, Inc.  
Drilling and Laboratory Services for I-99 Project  
State College, PA



Brandywine Airport Installation, observation, and  
processing for two Secondary Airport Control Station  
(SACS) monuments, West Chester, PA



Coal Pile Mesh Scan  
Colver Co-Generation Facility  
Colver, PA



PA DOT District 10-0  
On-Call Laboratory Testing Contract  
Various Locations, PA



GenOn Northeast Management Company  
Five-phased development of an ash disposal site  
Shawville, PA

**“ The geotechnical engineering services have been professional and responsive. With CDI / L.R. Kimball's input, we have developed a drilled shaft foundation solution that will save costs for our customer, the Pennsylvania Turnpike Commission.”**

**William J. Rohleder, Jr.**  
Figg Bridge Engineers, Inc.

## Expertise Areas:

### Oil & Gas

- Downstream – Gas Processing, Refining
- Midstream – Pipeline, Tanks, Terminals, Storage
- Upstream – Onshore Facilities
- Off-shore Topsides

### Chemicals

- Chemicals
- Petrochemicals
- Specialty & Agricultural Chemicals
- Renewable Energy

### Specialized Capabilities

- Feasibility Studies/Front End Engineering Design (FEED)
- Facilities Engineering
- Turnaround Services
- Construction Management
- HazOp Studies

[www.cdicorp.com](http://www.cdicorp.com)



*COSMAR Modernization Project  
Carville, LA*



*Power System Expansion  
Convent, LA*

CDI places the utmost importance on the health and safety of our employees and our clients, preserving the environment, and providing services and deliverables of the highest quality

**CDI incorporates our Health, Safety, Security, Environmental, and Quality (HSSEQ) principles throughout all facets of our organization.**



CDI recognizes that building a "best-in-class" operation requires a committed and inclusive approach to HSSEQ. Our equipment and installations are subject to rigorous testing and certification processes, and we implement a robust quality assurance framework for our staff. CDI's focus on transparency and continual improvement fuels our HSSEQ culture and performance.



CDI was honored at the ExxonMobil Baton Rouge Area Complex Safety Recognition Dinner. Our team received a Gold Safety Achievement Award for four consecutive years with zero recordable injuries!

West Virginia Division of Natural Resources  
A/E Services for Structural Repairs at Various State Parks



Sheetz, Inc., New Headquarters & Operations Center

Claysburg, PA

Photo Credit: © Jeffrey Totaro, 2017



## WORK

CAN AN OFFICE IMPROVE YOUR BOTTOM LINE?

With the workplace increasingly shifting from a “me” to a “we” work environment, the boundaries between private, public and shared space are becoming blurred. CDI studio one creates work platforms that encourage connectivity, flex with technology and support the “nextgen” of business. CDI studio one’s best practices are inspired by the doers, not just the designers.



## LEARN

CLASSROOMS WITHOUT BORDERS?

Knowledge sharing is a personal process of discovery as well as a social activity. Students learn both individually and as part of a group. This new learning model, perhaps the most transformational development in decades, requires environments that support the path to realizing one’s own potential. Working with thought leaders from many disciplines, CDI studio one is redefining the architecture of education.



## LIVE

CAN WE REDEFINE THE CONCEPT OF DWELL?

How and where we dwell is perhaps the most personal of architectural experiences. Whether it is your home, hotel, or dormitory, CDI studio one believes that the experience should be memorable; something more, something out of the ordinary. The firm’s attention to detail and sense of placemaking infuses each project with an energy that makes dwelling both uplifting and unforgettable.



## INVENT

HOW CAN DESIGN HELP DISCOVER WHAT’S NEXT?

CDI studio one enables discovery by creating environments that empower individuals to push boundaries in their respective fields by employing a multi-disciplinary approach that results in flexible and efficient mission-driven spaces that facilitate exploration and adapt to the “new and the next”. Their designs integrate functional programming with architecture resulting in spaces that inspire and nurture innovation at the highest level.



## Highways, Bridges, Environmental, & Traffic

50 Years of experience in Transportation Design

900+ Department of Transportation projects across 11 states



## Aviation

60 Active airport clients across 6 states

30+ Environmental Studies



## Commercial

600+ projects

Over \$1.4 Billion in construction value

3.4 Million SF of Commercial space designed



## Corrections

150+ Correctional Facility Studies & Designs completed

Over \$1.6 Billion in construction value



## Education

600+ Higher Education Projects

450+ K-12 Education Projects

One of the first LEED Gold Certified K-12 Schools in the Country



## Sports

180+ sports related projects designed

1st LEED Certified Higher Education Ballpark in the Country



## Geosciences

3,000+ mapping projects completed

75+ digital orthophotography projects completed



## Civil

500+ Land development projects

120+ water and wastewater treatment projects

84 dam projects

**1,200+** PROJECTS ACROSS  
WEST VIRGINIA  
INCLUDING STATE,  
COUNTY, AND LOCAL  
AGENCIES

**60+** WAREHOUSE / INDUSTRIAL  
FACILITY PROJECTS

**10** RECENT LABORATORY /  
MEDICAL RESEARCH PROJECTS:  
• PRIVATE COMPANIES  
• PUBLIC SAFETY / LAW  
ENFORCEMENT

**85+** OFFICE SPACE PROJECTS  
OVER **2.9 MILLION**  
SQUARE FEET OF OFFICE  
SPACE DESIGNED

**15** RECENT TENANT FIT-OUTS FOR:  
• RESEARCH COMPANIES  
• GOVERNMENT AGENCIES  
• PRIVATE FIRMS  
• EDUCATIONAL INSTITUTIONS  
• MEDICAL INSTITUTIONS

# **SPECIALTY CONSULTANT FIRM PROFILES**

# HISTORIC PRESERVATION



## ROLE ON PROJECT

Historic Preservation

## LEAD TEAM REPRESENTATIVE

Michael Gioulis

Partner

mike@michaelgioulis.com

## CONTACT INFO

614 Main Street

Sutton, WV 26601

304-765-5716

www.michaelgioulis.com

Mr. Gioulis has been active in Historic Preservation in West Virginia since 1977. He served as Historical Architect for the West Virginia Department of Culture and History and as Assistant Director of the Historic Preservation Unit. While there he was involved in a number of programs, including: Survey and Planning grants; historic resource surveys; review of construction grant projects; and tax certification applications.

He is familiar with all aspects of interpreting standards for rehabilitation of existing and historic buildings. In private practice, (established 1984) he has been involved in rehabilitation projects and design assistance programs for downtown structures. This includes services to the West Virginia Main Street Office, resulting in over 800 individual design projects, as well as workshops, resource team visits and technical assistance responses.

Consulting with architects and property owners, Mr. Gioulis is also involved in several rehabilitation projects involving residential and commercial buildings. Preservation of historic fabric and character-defining elements of these extant buildings are the ingredients providing for their efficient, contemporary use within the community.

## PROFESSIONAL SERVICE CAPABILITIES

- HABS/HAERS Reports
- 106 Reviews, Feasibility Studies
- Design Guidelines
- Historic Preservation Certification Applications
- National Register Nominations
- Historic Resource Surveys
- CAP Assessments



# **RELEVANT PROJECT EXPERIENCE**

## WEST HIGH STREET OFFICE BUILDING RENOVATIONS (CONT'D)

The following photos show the transformational progress.



# BOYCE PARK SKI LODGE BRIDGE REHAB

ALLEGHENY COUNTY DEPARTMENT OF PUBLIC WORKS  
Allegheny County, Pennsylvania



## Objective

The County wanted to make repairs to the entrance bridge structure as well as ensure compliance with ADA requirements.

## Solution

CDI / L.R. Kimball provided an on-site visual inspection and review of existing documentation provided by the County for this existing historic structure. From that, an analysis and report of recommended repair options was provided for review and input by the County.

Our team performed visual inspections of the existing concrete walking bridge. We provided repair methods for the structure which involved removal of loose and delaminating concrete, reinforcement and replacement with like reinforcing where required, and provided concrete repair materials. During the course of the work, it was discovered that the concrete deck was deteriorating more than expected. CDI / L.R. Kimball again visited the site and made recommendations while diligently maintaining the project schedule for the Department of Public Works.

## KEY PROJECT FEATURES:

- Visual inspection / analysis and report for recommended repairs on a historic park structure.

## TEAM MEMBERS INVOLVED:

CDI / L. R. Kimball

**TYPE:** Structural Review / Recommendation for Repairs

**COMPLETION DATE:** 2016

## PROJECT CONTACT:

Kevin Halaja, Construction Project Manager  
Office: 412.350.3781  
Cell: 412.303.9618

# ARCHITECTURAL & ENGINEERING OPEN-END CONTRACT (CONT'D)

Design features include: Roof solar panels system on building roofing; Natural lighting to the building through skylight/dormer or clerestory window systems; and Rain garden for site/ civil design

The warehouse building structural system was a pre-engineered building system, exterior being masonry base up to 6' high and metal panel system above as component of pre-engineer building system.

## South Park Stage Rigging

Involved the evaluation of existing framing to support speakers for an upcoming concert. Fast tracked schedule

## 3441 Forbes Avenue Masonry and Structural Inspections

Concerns from neighboring property undergoing construction about the stability of the existing masonry facade, particularly the existing parapet which showed signs of severe deterioration. We recommended removal of the parapet in question and further investigation of the facade on all sides of the structure.

## Courthouse Bullpen Stair Evaluation and Renovations

In the historic Allegheny County Courthouse which was constructed between 1883 and 1888, our team evaluated new openings in existing walls and designed solutions to add beams for a new floor area in the existing structure.

## Courthouse ATM Evaluation

Evaluated the existing tied arch floor system for the addition of a new ATM.

**Project Goals:** Our team is required to be available on an as-needed basis to assist the County staff with a variety of project types across the County throughout the course of this contract.

**Solution:** Every project has its own challenges but our team's strength is our ability to diligently manage multi-discipline teams to deliver a variety of projects simultaneously, on time and within budget. While we are a full-service team, we also have a successful track record with specialty consultants. We employ those consultants when necessary.

**Results:** With 25 successful projects to date under this contract, the County continues to trust our team to provide solutions to complex infrastructure projects. Our team was recently awarded a new, \$3.5 Million Facility that will support the many functions of the Department of Public Works with spaces for Vehicles, Warehouse, Garage, Salt Storage, as well as Offices.

**TEAM MEMBERS INVOLVED:** CDI / L. R. Kimball

**TYPE:** 25+ Projects to Date Under an Open-End Contract; Renovations / Additions/New Construction

**SIZE:** \$849,719 in fees from 2013 - Present

**COMPLETION DATE:** 2013 - Present

**PROJECT CONTACT:** Richard J. Oziemblosky, RA  
Project Manager, Architect, 412.350.0081  
Richard.Oziemblosky@AlleghenyCounty.us

## KEY PROJECT FEATURES:

- Variety of Projects including structural assessments and repairs of existing infrastructure, including those within historic structures
- Transformation of existing natural resources to new and enhanced use.
- Innovative use of existing infrastructure to create new community spaces.
- Value-Focused Results leveraged required infrastructure investment to create new uses.
- Flexible design solutions features structures that can be easily adapted for multiple uses.



This image taken from a drone shows Peoples Natural Gas Park (center), site of the Flood City Music Festival presented by AmeriServ Financial, and Point Stadium, host of the AAABA Tournament title game, in Johnstown on Saturday, Aug. 6, 2016. Steve Bittner/The Cumberland (Md.) Times-News. Steve Bittner/The Cumberland (Md.) Times-News.

## Objective

Peoples Natural Gas Park is a combination outdoor and indoor entertainment venue that was originally conceived as a seasonal component to complement a locally well known late Summer music and food festival held nearby in Johnstown, PA. This festival was originally conceived as a “block party” venue held in the vicinity of a parcel and vacated industrial building known as the Oil House located in the City’s once thriving steel district. The Johnstown Area Heritage Association (JAHA), the sponsor of the annual food and music festival, purchased the building and site with the intent of refurbishing and integrating a permanent component to the “block party” landscape while revitalizing part of the City’s heritage.

## Project Goals

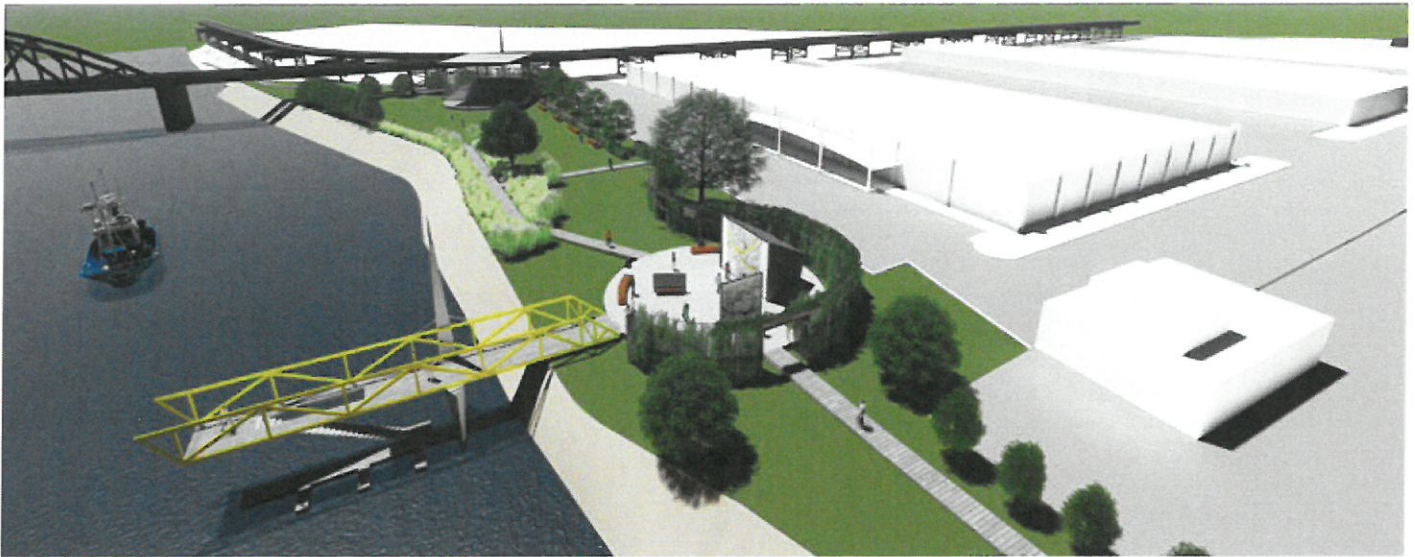
L.R. Kimball was selected to refurbish the existing Oil House and site in keeping with its industrial architectural heritage and to integrate the capability to provide medium-sized permanent indoor and outdoor live entertainment areas to serve both the local seasonal venue and others throughout the year. A vital component of the building refurbishment was also to transform the Oil House site from an abandoned industrial “hardscape” into an inviting park with ample green spaces, vegetation, and contemplative zones; a community asset supporting and playing off the City’s heritage. An additional component of this heritage was the City of Johnstown’s tragic three past floods. An existing site feature, the River Walk, included historical flood markers from these past events. This existing site “trail” feature was located at the perimeter of the Oil House site along the City’s levees constructed as flood control measures. This component was refurbished into a “greenway” by incorporation of vegetation, seating, and other park-like features along the route.

The Oil House refurbishment includes the addition of new accessible public restrooms that have direct access from the River Walk. Along with the live entertainment areas, there is a bar and food service component incorporated in the renovated Oil House. Permanent food vendor booths utilizing refurbished industrial shipping containers are also positioned on the site opposite the levee and the River Walk to complement both the seasonal venue vendors and independent Oil House and park in much the same way the site’s heritage would have supported.

## Results

The venue would not only become part of the seasonal festival, but would provide a permanent anchor for those proceedings as well as be available for other seasonal entertainment venues throughout the year from Spring through Fall.

## ADVANCED FACILITY MASTER PLAN (CONTINUED)



CDI Studio One designed a "once in a generation" transformation of the infrastructure at ALCOSAN communities as a part of the proposal process. This design was intended to be a "catalyst" for socio-economic growth and a unifying element for the region.

### Objectives:

- Create context specific urban design strategies for above grade tunnel / shaft utility connections
- Reinforce pedestrian connections between existing park / trail systems and the three rivers
- Identify high impact – low investment designs that form the basis for future private / public development

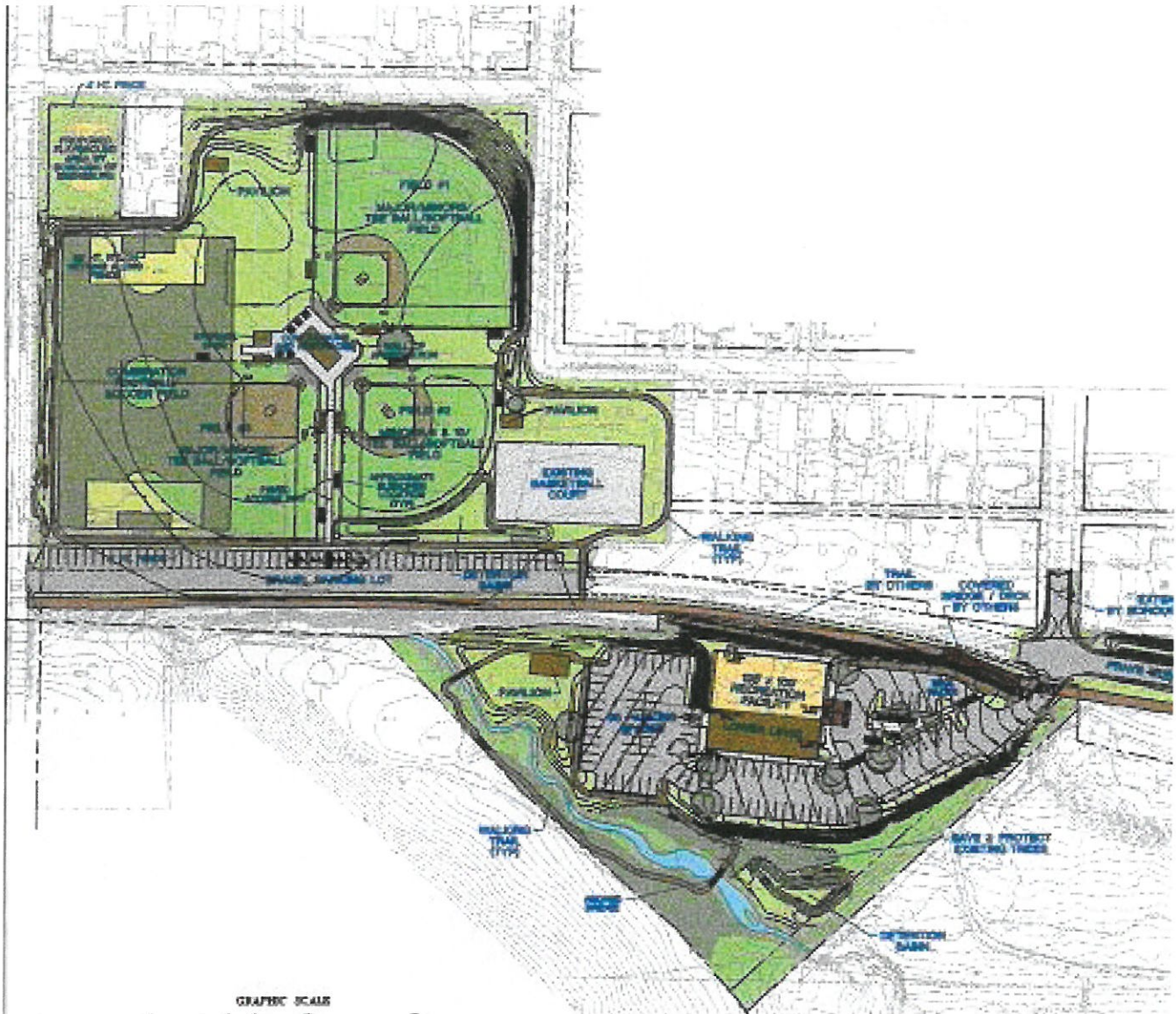
### Solution:

- Utilize a cost effective "kit of parts" system, which includes wayfinding, seating, performance space, vegetation walls, paving, and docks.
- Focus on dual purpose Green initiatives that reduce runoff and contribute to the natural ecosystem of the river ways

### Conclusion:

- Globally, cities and regions that have recognized the greatest return on investment for large Infrastructure projects embrace solutions that are simultaneously effective and impactful.
- The Advanced Facility Master Plan was intended to identify collateral benefits inherent in the Alcosan water system, which includes greater connectivity to the three rivers, economic development, and more sustainable and healthy, communities.

## COMMUNITY CENTER DEVELOPMENT PLANS (CONT'D)



In the spring of 1999, CDI / L.R. Kimball became involved with a group of local volunteers interested in providing a community recreation center for the benefit and welfare of the children of the Cambria County area. CDI / L.R. Kimball designed and provided periodic construction review for a state-of-the-art recreational complex that includes three baseball/softball fields, a soccer field, concession stand, shed, modern restrooms and a 19,000 SF recreation center for basketball and other activities. CDI / L.R. Kimball also played a key role in identifying and obtaining DCNR funding for the complex.

The overall impact of the project is monumental because the project is constructed along the Ghost Town Trail in Ebensburg, Pennsylvania. A bike/pedestrian, non-motorized trail, soon to be constructed by the Cambria County Conservation and Recreation Authority. CDI / L.R. Kimball coordinated the YPCC design with the trail organization and the Ghost Town Trail Extension.

The YPCC and the Memorial Fields Recreation Complex are a complete success. The self-sustaining community center is a highly utilized activity center where events like baseball and softball games, flag football, basketball tournaments, soccer leagues, craft shows, music lessons, meetings, and youth dances are constantly held and have been extremely beneficial to the surrounding communities.

## OPEN-END ARCHITECTURAL SERVICES CONTRACT SYSTEM WIDE (CONTINUED)

### **Mezzanine Load Capacity Structural Analysis and Repairs at Three Maintenance Facilities in District 3, Various Locations, PA**

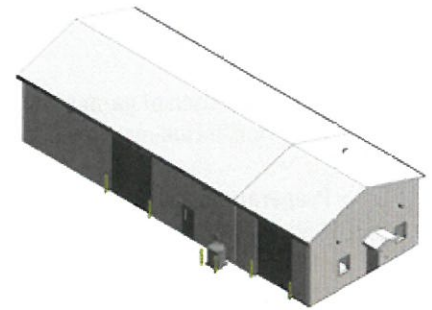
The Pennsylvania Turnpike Commission requested a floor live load rating for the mezzanines at three maintenance facilities in District 3. There were nine mezzanines included in the assessment (three located at New Cumberland; two located at Mt. Gretna; and four located at Bowmansville). All of the mezzanines were wood-framed structures with floors constructed of plywood over wood joists supported by wood stud walls or other wood framing. The Pennsylvania Turnpike Commission also requested a review of existing loading conditions and recommendations to address potentially unsafe conditions. All of the mezzanines were deficient related to storage loading so our team provided design services for strengthening for all mezzanines.

### **Staff Memorial at Entrance Plaza of the Pennsylvania Turnpike Commission Central Administration Building, Harrisburg, PA**

CDI/L.R. Kimball provided design services for the staff memorial at the entrance plaza of the Pennsylvania Turnpike Commission's Central Administration Building. Three potential locations were identified for the memorial, and concepts were developed for each of the three locations. Professional opinions of pros and cons of each location were provided to assist the Pennsylvania Turnpike Commission in the decision-making process.

### **Bowmansville Maintenance Facility Feasibility Study, Bowmansville, PA**

The project site is located on the Westbound lane at Turnpike Mile Marker 289. The site is comprised of many building structures for the Pennsylvania Turnpike Commission and the Pennsylvania State Police. This project involves a feasibility study for an addition to the existing Building 12 and review of code compliance for Building 12. Additional receiving and staging space with office and work area are needed. An addition of 20' x 30' to the existing building addition is planned.



### **Preliminary Building Code Analysis of Central Archive Facility, Middletown, PA**

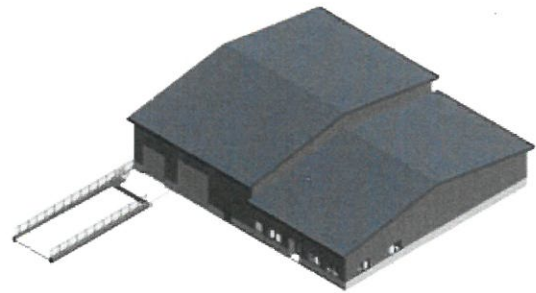
The project site is located at the Turnpike Industrial Park near Turnpike Mile Marker 247 in Lower Swatara Township, Middletown, PA. The existing building houses mixed uses of storage and business occupancies. In 2009, the existing building underwent interior renovations. The building was separated into two areas: Area "A" and Area "B". The areas are separated with two-hour fire barrier wall construction. Area "B" was converted into offices, a data center, and storage space with interior partitions while Area "A" remained mostly open area for future spaces for EZ Pass and Violation Center Departments. The Pennsylvania Turnpike Commission intends to convert half of Area "A" into Central Archive storage by dividing Area "A" into two areas. The storage area will be similar to the office building's file storage area.

### **Harrisburg West Interchange, Backup Traffic Operations, Harrisburg, PA**

CDI/L.R. Kimball is currently preparing architectural and engineering design and construction documents to convert the existing 1,000 SF garage area into an office building. The project also involves applications for the L & I permit.

### **Jefferson Hills New Warehouse, Cannonsburg, PA**

CDI/L.R. Kimball is currently preparing design and construction documents for a new warehouse building approximately 10,000 to 15,000 sq. ft. in size.



**TEAM MEMBERS INVOLVED:** CDI / L. R. Kimball

**TYPE/SIZE:** Varies by project - see descriptions above

**COMPLETION DATE:** 2001

**PROJECT CONTACT:** Carl Mittereder

Manager of Facilities Design/Engineering

Phone: 717.831.7569

Mobile: 717.645.2303

[cmittere@paturndike.com](mailto:cmittere@paturndike.com)



# **ORGANIZATION CHART & KEY PERSONNEL RESUMES**

# PROJECT ORGANIZATIONAL CHART (CONT'D)

## TEAM RESOURCES:

- A full-service team to call upon with expertise across all disciplines as needed for your project
- A team with 40 years of experience working in West Virginia
- 100+ professionals located in our WV and PA offices to assist with projects at each of the three parks.

### GEOSCIENCES

**WILLIAM STENGER, REM, CES, CRS**  
Geotechnical Services

**GEORGE KOPCHIK, PMP, PS, SP, PLS**  
Geospatial Services

**STEVE LANDGREBE, PLS**  
Survey Party Chief

### CONSTRUCTION ADMINISTRATION

**DALE WITHROW**  
Construction Administrator

### SPECIALTY SERVICES

**MATTHEW E. ANDERSON**  
Wood Scientist

**MICHAEL GIOULIS**  
Historical Consultant



## WESLEY HEVENER, PE

CDI / L.R. KIMBALL - PROJECT EXECUTIVE

Wesley is a registered professional engineer, with a BS and MS in Civil Engineering along with a Master's in Business Administration from West Virginia University. He brings over 16 years of experience and expertise in the transportation industry through project management, bridge design, and inspection. He has been involved with the management and design of a wide array of projects varying in complexity and delivery methods including large design-build projects. In addition to design, he brings experience and expertise with NBIS bridge inspections having recently served as the Project Manager for the Veteran's Glass City Skyway Bridge in Toledo, OH.

Wesley assists our team in the growth of our multi-discipline operations throughout West Virginia. His relevant project experience includes:

### HIGHLIGHTED EXPERIENCE

- Experience with a variety of projects across WV, including statewide contracts for WV State agencies

**YEARS OF EXPERIENCE:** 16

### EDUCATION

- MBA, West Virginia University, 2006
- MS, Civil Engineering, West Virginia University, 2003
- BS, Civil Engineering, West Virginia University, 2001

### REGISTRATIONS / CERTIFICATIONS

- WV, Professional Engineer, 2008
- Registered Professional Engineer in 10 Additional States
- eRailsafe System Badge
- SPRAT Level I Certification
- FHWA/NHI LRFD for Highway Bridge Superstructures – Steel, 2009, (#130081C)
- FHWA/NHI Bridge Safety Inspection of In-Service Bridges, 2010 (#130055)
- FHWA/NHI Project No. DTFH61-06-D-00037 Integrated Bridge Project Delivery and Life Cycle Management, 2010
- FHWA/NHI Inspection and Maintenance of Ancillary Highway Structures, 2012 (#130087)
- FHWA/NHI Fracture Critical Techniques for Steel Bridges, 2013 (#130078)
- FHWA/NHI Bridge Safety Inspection Refresher, 2015(#130053)
- ODOT AASHTOWare BrDR Seminar and Training, 2015
- FHWA/NHI Tunnel Safety Inspection, 2016 (#130110)
- FHWA/NHI Fundamentals of LRFR and Applications of LRFR for Bridge Superstructures, 2016 (#130092)

### AFFILIATIONS

- American Council of Engineering Consultants (ACEC) - Director for Joint Transportation Committee
- West Virginia Chamber of Commerce
- West Virginians for Better Transportation

### West Virginia Division of Highways, Henrietta Bridge – Calhoun County, WV

- Responsible for the initial layout, preliminary design and quality assurance of calculations for the Span Arrangement study. Additionally, he managed and assisted with the design, plan preparation and report for the Type, Span and Location study.

### West Virginia Division of Highways, US Route 35 P3 – Mason County, WV

- Responsible for the management of the LRFD substructure design for the County Route [CR] 29 and County Route [CR] 40 bridges. The bridges were both two-span structures with lengths of 380' (170'-210') and 350' (195'-155'), respectively. Both bridges consisted of steel I-girders with integral/semi-integral abutments and two-column and cap pier bents. CR29 was on a horizontal alignment while CR40 was located on a curved alignment with a radius of 6,140'. He was responsible for the quality assurance and control of the design calculations and drawings for the piers, deck and overhang systems and integral abutments for each bridge.

### West Virginia Division of Highways, Coalfields Expressway P3 – Wyoming County, WV

- Responsible for the design, details, plan preparation and general notes of the wingwalls and aprons for a 1, wingwalls 400' box culvert as part of a P3 project for a new four lane highway. He was responsible for LRFD design of ranging in length between 11' and 33' founded on spread.

### West Virginia Division of Highways, Admiral T.J. Lopez Bridge - Kanawha County, WV

- Project Manager and Design Engineer responsible for the gusset plate analysis of this 1089' three span continuous through truss bridge including the computation and checking of the gusset plate calculations for each required panel point on the bridge. He also managed and served as the Lead Bridge Inspector performing hands-on inspection of gusset plates to obtain the data required to analysis the plates. In addition, he provided oversight and assisted with the creation of LUSAS models for the bridge for further FEA analysis of all live load configurations. The work was performed in coordination with the FHWA Gusset Plate Evaluation Guidance Report.

### West Virginia Division of Highways, Kanawha Falls Bridge - Fayette County, WV

- Design Engineer/Lead Bridge Inspector for the hands-on inspection and LFD rehabilitation design of a three span simple through truss (265'-400'-265') over the Kanawha River supported on steel bent columns and concrete pier caps. He performed the finite element modeling in LUSAS of this truss bridge to provide forces necessary for this truss rehabilitation project. In addition, he was responsible for the load rating calculations which included the implementation of section loss for each primary member and the gusset plate rating calculations. He worked on the design and development of various repair types for the truss members based on the deterioration and capacity in order to strengthen the bridge for HS-20 live loading and assisted with the general notes and quantity calculations for the final plan submittal..

West Virginia Division of Natural Resources  
A/E Services for Structural Repairs at Various State Parks



## CHRISTOPHER BOWERS, PE, SE

CDI / L.R. KIMBALL - STRUCTURAL ENGINEER

Chris has over 18 years of experience as a Structural Engineer on a variety of projects including recreational, commercial, office, educational, judicial, public safety, correctional, transportation, and health care facilities. His responsibilities include the production of drawings from the schematic design phase through construction documents. He utilizes structural analysis and design software as well as AutoCAD and Revit in the drafting and production of drawings for structural systems.

Chris' relevant project experience includes:

**West High Street Office Building Renovations Including Complex Structural Repairs, CDI/L.R. Kimball, Ebensburg, PA**

**City of Williamsport, Williamsport, PA**

- Mid-Town Parking Garage Inspections
- Engineering Services for Cleaning and Inspection of the West 3rd Street Parking Garage

**Allegheny County Department of Public Works, Open End Contract including Structural Assessment and Repair Projects, Allegheny County, PA**

- North Park Ice Skating Rink, Concessions Building Evaluation / Roof Replacement and Repairs to the Viewing Deck
- Boyce Park Ski Lodge Bridge Rehab
- South Park Stage Rigging
- 3441 Forbes Avenue Masonry and Structural Inspection
- Courthouse Bullpen Stair Evaluation and Renovations
- Courthouse Evaluation of the Existing Ried Arch Floor System for the Addition of a New ATM Machine

**50 East Chestnut Avenue Garage Conditions Assessment, City of Washington, PA**

**Concurrent Technologies Corporation, Structural Analysis of Mezzanine Floor Loading, Johnstown, PA**

**Fulmer Company, Mezzanine Floor Load Rating, Export, PA**

**Tech Park Associates, Structural Analysis of IBM Office Building, Mechanicsburg, PA**

**Young Peoples Community Center Development, Ebensburg, PA**

**PA Turnpike Commission, Open-End Contract for A&E Services including Structural Assessment and Repair Projects, Various, PA**

**Cabell County Commissioners, Cabell County Emergency Services Center, Huntington, WV**  
**Carroll Electric Cooperation, CEC Structural Engineering Services to Design Foundations for High Side Structure at Summitville Substation, Ohio**

**Sheetz Corporate Headquarters and Operations Center, Claysburg, PA**

- Part of this project included the design of the dining room which is a one-story element connected to the first floor by the atrium. It is designed with exposed heavy timber columns and trusses with a natural stone gas-burning fireplace at one end.

### HIGHLIGHTED EXPERIENCE

- Chris' recent experience includes a variety of project types including recreational projects and a variety of project types for government agencies, as well as experience working in West Virginia

**YEARS OF EXPERIENCE:** 18

### EDUCATION

- BS, Civil Engineering, The Pennsylvania State University, 2000

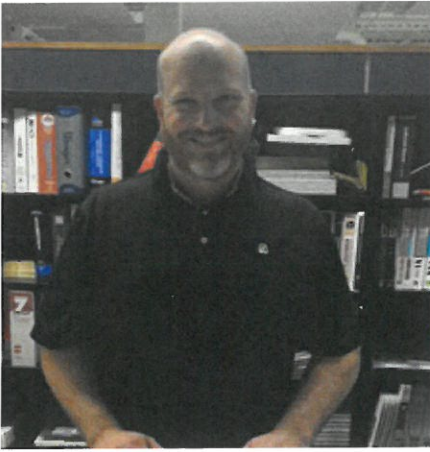
### REGISTRATIONS / CERTIFICATIONS

- WV, Professional Engineer, 2006
- Registered Professional Engineer in 14 Additional States
- Licensed Structural Engineer, in IL and NE
- California, Safety Assessment Program Evaluator, 2014
- Federal Emergency Management Agency/United States Army Corps of Engineers, Urban Search & Rescue, Structures Specialist

### AFFILIATIONS

- American Institute of Steel Construction
- American Concrete Institute
- American Society of Civil Engineers
- Structural Engineers Association of Pennsylvania - Structural Engineering Emergency Response Committee Member
- PEMA Task Force 2, Company 5, Urban Search & Rescue, Structural Engineer

West Virginia Division of Natural Resources  
A/E Services for Structural Repairs at Various State Parks



## **BRAD BLICKENDERFER, PE**

CDI / L.R. KIMBALL - ELECTRICAL ENGINEER

Brad has 20 years of experience in electrical, lighting, telecommunications, and security systems design for new construction and renovation projects. His responsibilities include site inspections and field surveys, cost estimating, coordination of various building systems with electrical and lighting requirements, preparation of reports and specifications, and ensuring compliance with all applicable codes and equipment specifications. Brad's responsibilities during the construction administration phase include shop drawing/submittal processing, review of value engineering and change order requests, and punch lists.

Brad's experience includes a wide variety of project types including education and sports, hospitals, office buildings, correctional facilities, institutional facilities, and other commercial and industrial facilities. Brad's relevant project experience includes:

### **HIGHLIGHTED EXPERIENCE**

- Brad's experience includes a variety of project types including renovations and repairs to buildings and support facilities for government agencies as well as recreational facilities

### **YEARS OF EXPERIENCE: 20**

### **EDUCATION**

- Bachelor of Science, Electrical Engineering, University of Pittsburgh at Johnstown, 1999

### **REGISTRATIONS**

- WV, Professional Engineer, 2012
- Professional Engineer in Seven Additional States

**North Central Recreation Center, Complete Electrical Design of New Ice Arena (Ebensburg Skate Park), Ebensburg, PA\***

**PA Turnpike Commission, Open-End Contract for A&E Services, Various, PA**

- Keggs Maintenance Facility, Manns Choice, PA
- Bowmansville Maintenance Feasibility Study, Bowmansville, PA

**PA Department of General Services, Various, PA**

- New Armstrong County Maintenance Facility, Salt & Equipment Storage Buildings, and Site Development (Schematic Design), Kittanning, PA
- New Headquarters Facility, P&S/Garage and Crime Lab, Erie Headquarters, Summit Twp., Erie County, PA

**New Stadium and Athletic Fields Master Plan, Armstrong School District, Kittanning, PA**

**Hancock County, WV, New Office of Emergency Management/911 Center and Health Department Building Complex, New Cumberland, WV**

**Armstrong School District, New Stadium and Athletic Fields (Schematic Design through Construction Documents), Kittanning, PA**

**Department of the Air Force, 911th Airlift Wing IDIQ Contract, Coraopolis, PA**

- Repair Airfield Lighting (East and West Apron)
- Repair/Add to Security Forces Building 221

**Federal Aviation Administration (FAA), Atlantic City International Airport, Atlantic City, NJ (Consulting Engineering Services Under an Indefinite Delivery/Indefinite Quantity Contract, as a consultant to Maser Consulting P.A.)**

- Electrical Design Services for Existing Lightning Protection System Replacement at the Central Utilities Plant (Building 303) at FAA WJHTC Airport Operations Area
- Hughes Building 211 Life Safety Study & Improvements
- Hughes Building 300 HVAC Upgrades
- Hughes Building 303 Chiller and Service Upgrade
- Main Electrical Service Substation Enclosure
- Plumbing & Electrical Design Services for New Water Main Extension at the FAA WJHTC Airport Operations Area

**Cambria County PMC Building, New Office Addition and Interior Renovations, Ebensburg, PA**

**Hydro Recovery Inc., Blossburg Water Treatment Facility, Blossburg, PA**

\*Indicates project experience prior to joining CDI/L.R. Kimball



## JOANNE PIZZO, AIA

CDI / L.R. KIMBALL - PROJECT ARCHITECT

Joanne encourages and channels creativity to make sure every stakeholder's voice is heard. As an architect, she integrates technical requirements with aspirational goals, coordinating complex plans resulting in innovative design solutions. Joanne also serves as an educator and mentor for architecture students, young professionals and high school students, as a member of the ACE Mentoring Program in Philadelphia.

She brings two decades of architectural design and project management expertise as well as her well-rounded portfolio including extensive experience in facility design including renovations and new construction. She has led key projects ranging from the 350-seat Trexler Pavilion at Muhlenberg College to a 70,000-square-foot academic center at Delaware Valley University.

### HIGHLIGHTED EXPERIENCE

- Joanne's experience includes studies and assessments of existing facilities as well as projects requiring renovation / repair. Her experience has included museums, theaters, multi-purpose facilities and recreational buildings, including those on the national register of historic places.

**YEARS OF EXPERIENCE:** 30

### EDUCATION

- Master of Architecture, University of Pennsylvania, 1987
- Bachelor of Science in Architecture, The Catholic University of America, 1983

### REGISTRATIONS / CERTIFICATIONS

- PA, Registered Architect, 1992

Joanne's relevant project experience includes:

#### Feasibility study for the Martin Luther King Center, Atlanta, GA\*

- This project involved the redesign of the entry to the site, new facades, repurposing existing buildings, redesigning open space on the site and adding a new building with interactive museum, archival space, admin and event space

#### Shippensburg University, Regional Theater with 2000 Seats, Shippensburg, PA\*

#### Georgian Court University, Multi-Purpose Chapel for 350, Overlooking the Arboretum, Lakewood, NJ\*

#### Organization of American States, Feasibility Study for Various Services including a New Office for this Historic Building, Washington D.C.

#### Conversion of Outbuildings of an Old Farm into Art Studios and a Performance / Exhibit Space, Cherry Hill Twp, NJ\*

#### Sheetz, Inc.

- Distribution Center Renovation
- Finance Building Renovation
- Warehouse Renovation

#### Muhlenberg College, 350-seat Trexler Pavilion, Allentown, PA

#### Wagner College, Master Plan Update + Feasibility Study (2) Buildings, Staten Island, NY

#### French American School (Pre-K through 8) Master Plan & Site Assessment, Princeton, NJ

#### American Overseas School Rome (AOSR), Rome, Italy\*

#### Frankfurt International School, Master Plan, DaVinci Building, and Master Plan Update, Frankfurt, Germany\*

\*Indicates project experience prior to joining CDI/L.R. Kimball



## CAMERON MOCK, PE

CDI / L.R. KIMBALL - WATER/WASTEWATER ENGINEER

Cameron is a Civil Engineer with over 40 years of experience on a variety of project types. His expertise includes water/wastewater and land development projects including water systems, sewerage systems, site development, stormwater management, hydrology, hydraulics, and complicated updates to water treatment plants and sanitary sewer systems. Additional experience includes highway design, earth sciences, erosion and sedimentation control, mine permitting, mine waste disposal facilities design and permitting, municipal engineering, engineering surveying, construction inspection, and construction contract management.

Cameron's relevant project experience includes:

### HIGHLIGHTED EXPERIENCE

- Cameron specializes in water/wastewater, stormwater management and land development projects.

**YEARS OF EXPERIENCE:** 41

### EDUCATION

- BS, Civil Engineering Technology, University of Pittsburgh at Johnstown, 1977

### REGISTRATIONS / CERTIFICATIONS

- WV, Professional Engineer, 1985
- Registered Professional Engineer in 6 Additional States

### AFFILIATIONS

- American Society of Civil Engineers
- National Society of Professional Engineers
- Pennsylvania Society of Professional Engineers
- American Society of Highway Engineers
- American Water Works Association

#### PA Turnpike Commission, Open-End Contract for A&E Services, Various, PA

- New Kegg Maintenance Facility, Manns Choice, PA
- Bowmansville Maintenance Feasibility Study, Bowmansville, PA

#### PA Department of General Services, Various, PA

- New Armstrong County Maintenance Facility, Salt & Equipment Storage Buildings, and Site Development (Schematic Design), Kittanning, PA

#### United States Gypsum Corporation, Washingtonville, PA

- Synthetic Gypsum Auxiliary Storage Shed

#### Indiana County Board of Commissioners, Indiana, PA

- Hoodlebug Trail Extension Consulting Services

#### Jefferson County Board of Commissioners, Jefferson County, PA

- Parks Master Plan Study Contract Agreement, Cloe Lake Project

#### City of Pittsburgh, Pittsburgh, PA

- North Shore of the Ohio River Trail

#### Borough of Franklin, Cambria County, PA

- Engineer of Record
- Sanitary Sewer Improvement Project

#### Upper Stonycreek Joint Municipal Authority, Somerset County, PA

- Sanitary Sewer System Improvements Project
- Sewage Treatment Plant Upgrade and Expansion

#### Cambria Township Sewer Authority, Cambria County, PA

- Colver Wastewater Treatment Plant Upgrade
- Sanitary Sewer System Improvements Projects

#### Municipal Authority of the Borough of Ebensburg, Cambria County, PA

- Sanitary Sewerage Projects
- Water System Improvement Project

#### City of Bethlehem, Northampton County, PA

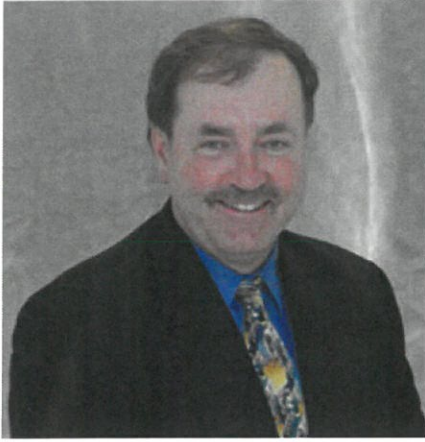
- Bethlehem CSO-012 Relocation

#### Johnstown Redevelopment Authority, Johnstown, PA

- Interceptor Evaluation

#### City of Johnstown, Johnstown, PA

- Sanitary Sewer Evaluation



## DAVID PETROSKY, RLA, ASLA

CDI / L.R. KIMBALL - LANDSCAPE ARCHITECT

David has over 40 years of design experience on a variety of projects. He participates in all aspects of the site design procedure including client relations, marketing and proposals, meetings, project scheduling, layout and design, construction details, cost estimates, specifications, bidding, contract administration, and inspection. He has assisted in site assessments, completed conceptual and preliminary plans, and produced final site and landscape plans. He is also very familiar with ADA requirements.

David received a copyright for a landscape program, EZ-Plant™. He devised this software for the industry and currently uses it for his projects. The program consists of databases of plants, symbols, and schedules and adds the plant quantities shown on the landscape plan. The software then tallies the total to produce final costs that greatly increases productivity through AutoCAD. He updated and revised the program in 2007 to work with an Excel spreadsheet database and in 2009 to include native and adaptive plants for the sustainable site initiative.

David's relevant project experience includes:

### Young People's Community Center Development Plans, Ebensburg, PA

### ORX Railway Corporation, Tipton, PA

- Business and Manufacturing Addition

### Logan Township Board of Supervisors, Altoona, PA

- Logan Township Municipal Building

### Indiana County Board of Commissioners, Indiana, PA

- Hoodlebug Trail Extension Consulting Services

### Indiana County Office of Planning & Development, Indiana, PA

- Indiana County Regional Trail Connectivity Study

### Jefferson County Board of Commissioners, Jefferson County, PA

- Parks Master Plan Study Contract Agreement, Cloe Lake Project

### Robert Kipp & Associates, Fayette County, PA

- Henry Clay Township Community Park Master Plan

### White Township Municipal Authority, Indiana, PA

- White Township Recreation Complex

### Carnegie Mellon University, Pittsburgh, PA

- Junction Hollow Athletic Fields Feasibility Study

### Cambria County Conservation Authority, Cambria County, PA

- Path of the Flood Trail Links Feasibility Study

### Big River Development/Hammel Companies, Inc., Pittsburgh, PA

- Armstrong Cork Factory Trail Extension and River Bulkhead Replacement

### City of Pittsburgh, Pittsburgh, PA

- North Shore of the Ohio River Trail

## HIGHLIGHTED EXPERIENCE

- David's experience includes projects that directly affect the community such as the Young Peoples Community Center and field development, as well as other parks and trails. His experience also includes projects that require proper accessibility and updated code compliance.

**YEARS OF EXPERIENCE:** 40

## EDUCATION

- BA, Landscape Architecture, West Virginia University, 1978

## REGISTRATIONS / CERTIFICATIONS

- PA, Landscape Architect, 1997
- New Jersey, Landscape Architect, 2015

## AFFILIATIONS

- American Society of Landscape Architects
- Open Committee on Computing, American Society of Landscape Architects
- Green Building Alliance, Laurel Highlands Group
- Board of Directors, Natural Diversity





## **WILLIAM STENGER, REM, CES, CRS**

CDI / L.R. KIMBALL - GEOTECHNICAL SERVICES

Bill has a wide range of experience involving environmental sciences, geophysics, and stockpile inventory services. His years of practice in project management and field supervision of a vast number of environmental and bulk materials storage projects includes planning and oversight of stockpile inventories and audits, permitting, strategic development and implementation of multi-phase environmental investigations and audits, administration and performance of Phase I, II, and III environmental assessments, waste management planning and implementation, and performance of environmental impact studies as well as extensive organization, implementation, and oversight of field sampling programs for soil, aqueous, and gaseous matrices.

### **HIGHLIGHTED EXPERIENCE**

- Over 30 years of experience in the Geosciences field

### **YEARS OF EXPERIENCE: 33**

### **EDUCATION**

- BS, Environmental Science, Alameda University, 2006

### **AFFILIATIONS**

- Water Environment Federation
- Environmental Assessment Association
- Pennsylvania Association of Environmental Professionals
- Environmental and Engineering Geophysical Society
- National Ground Water Association
- National Registry of Environmental Professionals

### **REGISTRATIONS / CERTIFICATIONS**

- Registered Environmental Manager
- Certified Environmental Specialist, No. 14420, 1997
- Certified Remediation Specialist, No. 14420, 1997
- OSHA Hazardous Waste Site Supervisor
- OSHA 40 Hour Hazardous Waste Operations & Emergency Response Training
- OSHA Confined Space Entry & Rescue
- DOT / IATA Certified
- Nuclear Safety Officer - NRC Certified
- Licensed Nuclear Density Gauge Operator
- Underground Mine Safety 40 Hour - MSHA Certified
- Field Soil Investigator - ENSYS Certified
- Health and Safety Officer Training - LRK Certified
- Automated External Defibrillation - AHA Certified

Bill has vast experience with hazardous waste and residual waste remediation projects, implementing technologies such as air sparging, oil/water separation, soil vapor extraction, pump and treat systems, excavation, and incineration, thermal desorption and bioremediation. He also has experience in under and aboveground storage tank removals and installations and inspections including project management, implementation, and report compilation. He also has significant experience in the performance and management of stockpile inventory services and stockpile administration, utilizing various technologies including nuclear depth-density testing, bulk density testing, continuous auger sample tube testing, photogrammetry, terrestrial scanning, etc. He has considerable experience in utility location and non-intrusive subsurface investigations, utilizing equipment such as the RD400 Radiodetection Unit, Geonics Ground Penetrating Radar Unit, Scribntrex Magnetometer, and EM-31 Electro-Magnetometer. He has also used and directed the use of air-knife and hydro-excavation soft-dig technologies.

Bill also serves as the Corporate Radiation Safety Officer and is responsible for liaison activities between CDI / L.R. Kimball and the US Nuclear regulatory Commission, as well as arranging reciprocity with applicable State Nuclear Regulatory Agencies.

While previously serving as a Corporate Health and Safety Officer, Bill gained extensive experience in the organization and application of health & safety and training programs including MSDS programs, field certification tracking, toxicology, industrial hygiene, site specific health and safety plans, NRC compliance programs, and medical monitoring programs.

Bill is also experienced in specification writing, cost estimating, and the preparation of decision documents, feasibility studies, emergency response plans, and spill prevention plans. He has also prepared numerous permit applications and planning modules such as Surface Mining Permit Applications, NPDES and Industrial Planning Modules, Highway Occupancy Permits, Coal Refuse Disposal Permits, and Air Quality and Regulatory Compliance Permits.

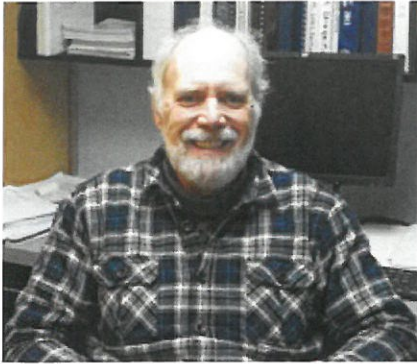
A select list of Bill's relevant projects includes:

**Stockpile Inventory Services, FirstEnergy, OH, PA, and WV**

**Bedford Springs Hotel and Golf Course - Renovations, Bedford, PA**

**Cambria Iron Works - Rosedale Tract Phase I & II ESA, Johnstown Redevelopment Authority, Johnstown, PA.**

- Project involved a multi-matrix site characterization of a 15-acre parcel at a former steel manufacturing facility.



## STEPHEN LANDGREBE, PLS

CDI / L.R. KIMBALL - SURVEY PARTY CHIEF

Steve serves as a Senior Survey Party Chief with over 30 years of experience. He has been responsible for various aspects of survey field work, data reduction, and production of the required survey deliverables. His years of experience include horizontal and vertical control networks, geometry, boundary and ALTA/ACSM surveys, right of way surveys, erosion and sedimentation control relating to stakeout of silt fence, etc. along with utility surveying and construction inspection. Steve has gained valuable knowledge in various phases of surveying relating to architectural, civil design, photogrammetric mapping, stockpile volumes, and GIS projects.

### HIGHLIGHTED EXPERIENCE:

- Steve's experience involves a variety of project types including projects with state agencies such as the WV DOT.

### YEARS OF EXPERIENCE: 31

### EDUCATION:

- Associate in Science, Surveying, Paul Smith's College of Art, 1987

### REGISTRATIONS / CERTIFICATIONS:

- WV, Professional Land Surveyor, 2017
- NY, Professional Land Surveyor, 1995
- TN, Professional Land Surveyor, 2009
- PA, Professional Land Surveyor, 2013

Steve's relevant project experience includes:

#### WVDOT Statewide Open-End

- Surveying to establish photo control and set monumentation for several aerial photography and surveying projects in West Virginia.

#### PA Department of General Services, Various, PA

- New Headquarters Facility, P&S/Garage and Crime Lab, Erie Headquarters, Summit Twp., Erie County, PA

#### Thorn Run Interchange Improvement, Moon Township, Pittsburgh, PA

- Established reference circles and performed field surveying and office processing

#### CPV Fairview Power Plant, Vinco, PA

- 86 acre ALTA survey, established 5 permanent Class B Rod Marks, various property and boundary and easement surveys all relating to the property transfer and construction of a gas-fired generating station.

#### PADOT SR70/SR79 Interchange, Washington County, PA

- Surveying to establish photo control for photogrammetric base mapping. Re-established the existing horizontal and vertical geometry.

#### PA District 9 - SR 6219 Section 020

- As-built surveys and Kimberly Run Stream Relocation field surveying and office processing.

#### Lehigh-Northampton Airport Authority, Queen City AGIS Mapping (ALP Update; Obstruction Mapping and Removal), Allentown, PA

- Performed horizontal and vertical ground control network, runway centerline and profile surveys, planimetric detail surveying and field verification. Completed in accordance with the current FAA AC150-5300 -18B Airport GIS specifications.

#### Wal-Mart Stores, Inc., Kilbuck Wal-Mart Engineering, Kilbuck, Allegheny County, PA

- Performed field survey monitoring of numerous monuments throughout the site and processed GPS data collected to be updated in the monitoring report spreadsheets. CDI/L.R. Kimball provided design review, site monitoring, data collection, construction, and survey services to Wal-Mart Stores, Inc. following a significant landslide (1.5 million cubic yards) during the site grading of the River Pointe Plaza development. Immediately following the landslide, emergency efforts occurred to reopen SR 65 and the Norfolk and Southern railroad line. An extensive site monitoring program was established that included surface monitoring points, inclinometers, and piezometers. Data collected from the site was evaluated and a multi-phase construction plan was developed to stabilize the construction site.



## MATTHEW E. ANDERSON

WOOD SCIENCE CONSULTING - WOOD SCIENTIST

Matthew specializes in the inspection, assessment, and evaluation of wood and wood-based products used in all aspects of construction, engineering and design. Matthew has worked nationally and internationally, and has an excellent reputation of helping clients solve their problems.

His expertise is in the investigation and expert analysis relating to wood and wood-based materials used in all aspects of construction including, but not limited to: failure analyses; visual grading of lumber and timbers in-situ; mechanical testing; resistance drilling and condition assessments; performance of structural composite lumber; wood species identifications; finish problems associated with wood and wood-based materials; assessment of wood decay; insect attack and marine borers; evaluation of marine and foundation timbers and pilings; microscopy analyses; mechanical testing; solid wood, engineered wood and bamboo flooring investigations; cedar shake and shingle roof and wall installations; furniture design and failure; wooden ladders; moisture intrusion issues in structures; building envelope issues; assessment of mold; performance of wood plastic composites; evaluation of glued laminated timbers; preservative retention analyses; assessment of cooling tower and lumber; analysis of shipping container flooring; and more.

Matthew's relevant project experience includes:

Structural Assessment of the Timber Framing in the K120 and K90 Olympic Ski Jumps., Lake Placid, NY.

Assessment of Bowstring Trusses at 190 Banker Street, Brooklyn, NY.

Resistograph Testing of the Wooden Elements in Bridge No. 1901000, MD-364, over Dividing Creek.

Assessment of a Timber Truss in Rockefeller Hall, Cornell University, Ithaca, NY.

Jeffry Ullman and Renee Ullman vs. John Benson d/b/a National Property Inspections and National Property Inspections, Inc. –Wood Decay and Strength Loss.

Assessment of Arch Glulam Beams in the CBEI Building, Philadelphia, PA.

Evaluation of Timber Piles Removed from Port Covington, Baltimore, Maryland.

Assessment of the First Level Floor Elements at St. Peter's Church, Pittsburgh, Pennsylvania.

Assessment of the Roof Elements in the Old Dallas High School.

Structural Assessment of Timber Trusses and Roof Rafters at the Highland Presbyterian Church, Louisville, KY.

Assessment of a Bowstring Truss in Hangar D, Westchester County Airport.

Revision of NACFC Unified Facilities Guide Specifications.

Assessment of Windsor-One and Advantage Board Products.

Evaluation of Several Wood Poles at OCI Beaumont LLC, Nederland, Texas.

Assessment of Architectural Siding and Trim Materials at Harvard University.

### HIGHLIGHTED EXPERIENCE

- Matthew specializes in the inspection, assessment, and evaluation of wood and wood-based products used in all aspects of construction, engineering and design.

YEARS OF EXPERIENCE: 22

### EDUCATION

- MS, Wood Science & Engineering, Oregon State University, 1998
- BS, Construction Management & Wood Engineering, SUNY Environmental Science & Forestry, 1996

### PUBLICATIONS

- Masters of Science Thesis, 1998
- Peer Reviewed Journal Articles (5)
- Regional, National and International Publications and Presentations (20+)
- Other Technical Publications (150+)

### AFFILIATIONS

- American Society of Testing and Materials
- American Wood Council
- Forest Products Society
- American Wood Protection Association
- Society of Wood Science & Technology
- American Society of Civil Engineers

# LICENSES / CERTIFICATIONS



West Virginia State Board of Registration  
 for Professional Engineers

CAMERON R. MOCK  
 WV PE #009801

This is to certify that the above named PROFESSIONAL ENGINEER has met the requirements of the law, is duly registered and is entitled to practice engineering in the State of West Virginia.

EXPIRES December 31, 2018



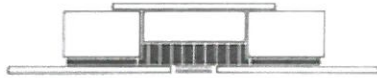
West Virginia State Board of Registration  
 for Professional Engineers

DAVID G. MINNEAR  
 WV PE #009681

This is to certify that the above named PROFESSIONAL ENGINEER has met the requirements of the law, is duly registered and is entitled to practice engineering in the State of West Virginia.

EXPIRES December 31, 2018

DEPARTMENT OF EDUCATION AND THE ARTS • DIVISION OF CULTURE AND HISTORY



STATE OF WEST VIRGINIA  
 GASTON CAPERTON, GOVERNOR

DR. STEPHEN E. HAID, SECRETARY

WILLIAM M. DRENNEN, JR., COMMISSIONER

01/28/1991

Mr. Michael Gioulis  
 612 Main Street  
 Sutton, WV 26601

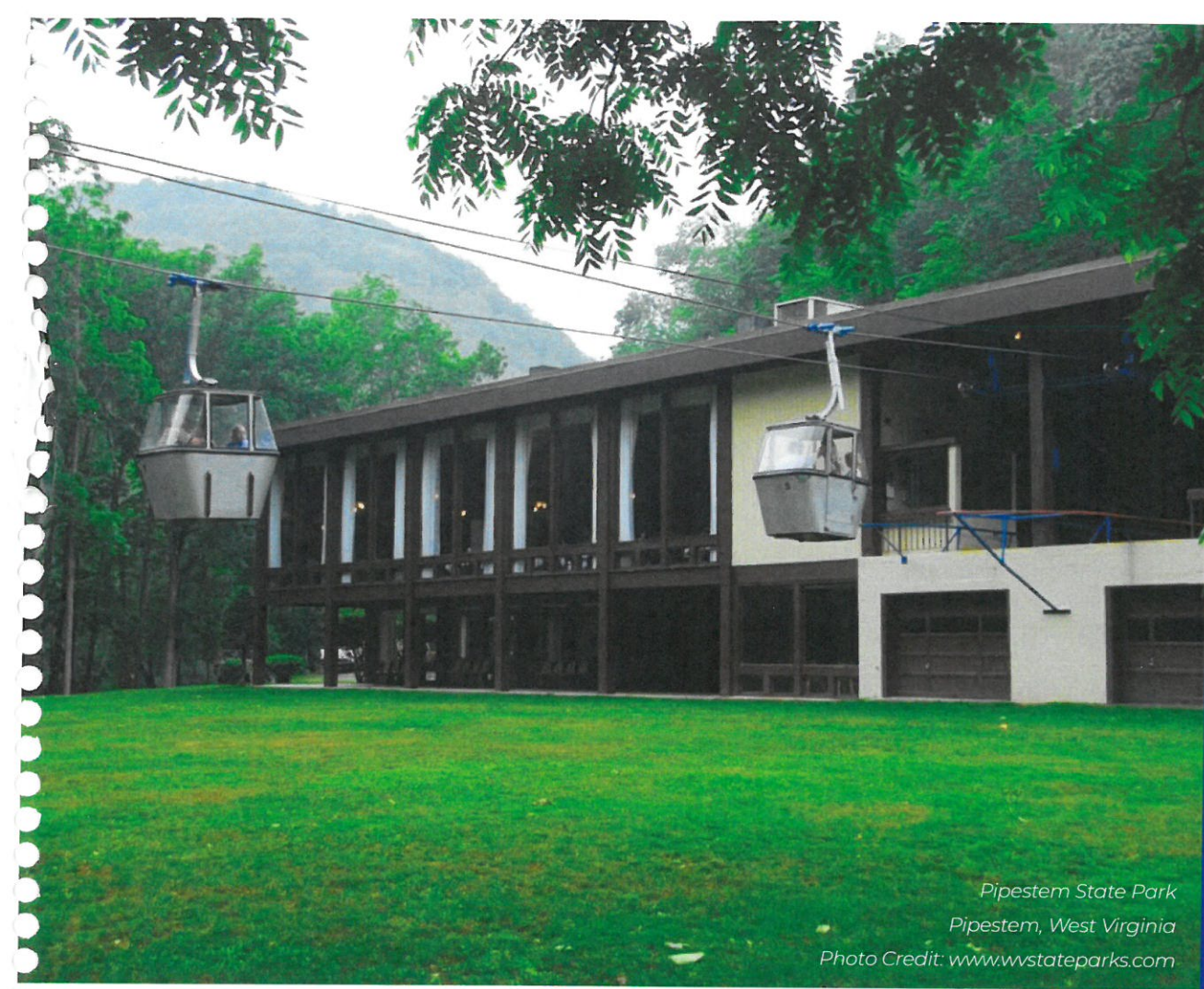
Dear Mr. Gioulis:

This is to inform you that your name has been included on our list of qualified consultants who meet the 36 CFR 61 qualifications.

Thank you for your time and cooperation.

Sincerely,

*Thomas Landon*  
 Thomas Landon  
 Planning Assistant  
 Historic Preservation Office



*Pipestem State Park  
Pipestem, West Virginia  
Photo Credit: [www.wvstateparks.com](http://www.wvstateparks.com)*



*Twin Falls State Park  
Mullins, West Virginia  
Photo Credit: [www.tripadvisor.com](http://www.tripadvisor.com)*

## TAB II - APPROACH AND METHODOLOGY

## SCOPE MANAGEMENT

The project scope is based on the understanding of the needs of the stakeholders that we include from the start of every project. We manage scope by thoroughly delineating what is and what is not included in the project. The Work Breakdown Structure (WBS) is our fundamental planning tool that defines scheduled activities and deliverables. All aspects of the project are thought through. The WBS provides a way to monitor and control the project including scope changes.

Change requests can be the single biggest threat to completing a project successfully on time and on budget. Therefore, all requested changes must be evaluated to determine their impact on the project's scope, budget, and schedule. Requested changes are sometimes straightforward, such as adding a new task, but, more commonly, the change is less obvious, such as completing one task before starting another. CDI/L. R. Kimball analyzes the impact of each requested change, communicates the impact, and makes our recommendation to the client. If the requested change is approved through the change management process, CDI/L. R. Kimball updates the Project Plan and coordinates required contractual updates.

## TIME MANAGEMENT

Having identified project scope, our team is able to anticipate the timeline and activity durations. The project schedule is developed with project milestone requirements and other time-sensitive constraints. The project schedule provides CDI/L. R. Kimball and the client with a road map to track and coordinate the activities associated with the overall project. In addition, the project schedule will include major client-related tasks and activities that need to be completed to achieve the project milestones. In short, the project schedule enables progress reporting and supports monitoring activity to completion.

Throughout our projects, progress is monitored and reported through regular project team meetings. Actual progress is measured against the baseline schedule, resource needs are discussed, and roadblocks are resolved. Significant variances from the Project Plan are assessed and acted upon to keep the project in alignment with the Project Plan. If necessary, changes and options are discussed with the client.

## QUALITY MANAGEMENT

CDI/L. R. Kimball maintains an in-house team of architects, engineers, and project managers who are experienced and are responsible for rigorous quality assurance and quality control (QA/QC) of construction documents. These reviewers are typically not assigned to the project that they are reviewing, but they are familiar with the building type, thereby facilitating reviews through a "fresh set of eyes".

Our QA/QC team follows an established policy for drawing review and coordination. These reviews are in addition to the continual reviews undertaken by the Project Manager, Project Architect, and Senior Technical Leaders within each discipline. These formalized QA/QC reviews take place at the 30%, 60%, and 90% stages of the production of construction documents. Our Project Manager works closely with the QA/QC team during this review process for each project.

CDI/L. R. Kimball's QA/QC reviews also include coordination of the architectural drawings with the documents produced by the mechanical, electrical, plumbing, and structural disciplines. In this regard, we are currently utilizing an interdisciplinary coordination process and construction document review system specifically designed to address points of interface, enabling both production personnel and our QA/QC team to locate discrepancies between disciplines.

## COMMUNICATION MANAGEMENT

Communication and coordination among all parties is critical to assure successful execution of the Project Plan. With having an office location and our Project Executive located within Charleston WV, we would be available to be in your office for meetings within a short timeframe allowing a smooth interaction and in-person communication to efficiently keep project moving, assist in reducing scope creep and provide a more cost-efficient project. During the project "kick-off" meeting with the CDI/L.R. Kimball team and client staff, we review the Project Plan, procedures for change control, project specifications, and production methodology to eliminate any misunderstandings and align expectations. A vital part of this meeting is the discussion of project communications--specifically, what

# DESIGN PHASES

## DESIGN DEVELOPMENT PHASE

In the Design Development Phase, the emphasis moves from contextual to more detailed concerns. It should be emphasized that while a great number of decisions are made in the Design Development Phase, they should be within the context of conceptual decisions made in the Schematic Design Phase.

The Design Development Phase is best characterized by the work product at the completion of the phase. It must be developed to the point that the construction drawings and specifications can be started. In many firms, Design Development plans become the base sheets for working drawings. Accordingly:

- Site drawings are developed to show building location and access, circulation, site grading, and planting.
- The architectural solution is developed to the point where all spaces are delineated and dimensioned.
- Sections and elevations are developed to identify materials and clearances for building structural, mechanical, and electrical systems.
- A complete outline specification is developed.
- The probable construction cost is updated to assure consistency with budgetary goals.
- Tentative bid packaging must be confirmed with the owner and construction manager (if applicable).
- Phasing plan may be modified.

Before commencing the Construction Documents Phase, documents must be checked against regulations of all agencies having jurisdiction over the project. Where possible, this should also be done at the end of each phase prior to starting the subsequent phase.

### DESIGN DEVELOPMENT PHASE DELIVERABLES

- Drawings and outline specifications and other documents to fix and describe the size and character of the project for all related disciplines.
- A detailed Statement of Probable Construction Cost.
- A project schedule indicating milestone completion dates.
- Reconciliation of differences between the construction budget and the detailed Statement of Probable Construction Cost.
- Provide paper copies of the Design Development documents and an electronic PDF of all Design Development documentation.

## CONSTRUCTION DOCUMENTS PHASE

During this phase, the Architect prepares final drawings and a project manual that includes complete specifications. All drawings and documents are checked for coordination with associated disciplines and consistency with programmatic goals and objectives. Each consultant will develop an updated Statement of Probable Construction Cost.

In more simple terms, this phase of the project includes the following basic activities:

- Completion of the Contract Documents
- Preparation for Bidding of the Construction Contracts
- Preparation for Construction

Coordination and integration of the three activities in the Construction Documents Phase is essential.

The purpose of phased developments of architectural projects is to establish an ordered sequence of decision making prior to the start of the final construction documents. If the process proceeds in the proper sequence, the Construction Documents Phase should be largely dedicated to production.

The bidding and construction sequencing or phasing of work and scheduling must be finalized within this phase. Occupancy dates are important. Accordingly, impacts of scheduling become more acute and must be thoroughly discussed relative to their implications with regard to cost and market conditions.

Throughout all phases of the design process, CDI/L. R. Kimball considers value engineering a technique that focuses on eliminating items that create added cost to a building program without added value. Each expenditure that relates to the function of the facility is evaluated as to its life cycle cost.



## CONSTRUCTION ADMINISTRATION PHASE

Careful administration of the construction contracts is invaluable to a quality product delivered on time. Effective communication among the owner, contractor, construction manager (if applicable), and Architect is imperative. To that end, communication procedures must be formalized for job conferences, correspondence, schedules, notices, requisitions, etc. and must be channeled along specific routes.

During the Construction Phase, the Architect or Engineer visits the site at intervals appropriate to the stage of construction. The Architect or Engineer reviews the contractor's proposals for changes and prepares change orders for the owner's approval. The Architect or Engineer is the agent of the owner and, as such, transmits directives and instructions to the contractor.

Shop drawings and material submissions are reviewed. The Architect or Engineer assists in obtaining a certificate of occupancy when the contractor issues written notice that all work has been completed. The Architect or Engineer develops a punchlist of non-conforming work that must be completed or corrected.

### CONSTRUCTION ADMINISTRATION PHASE DELIVERABLES

- Conduct construction progress meetings and provide minutes.
- Conduct site visits at appropriate intervals to evaluate construction as to conformance with the intent of the construction documents.
- Advise on tests and/or inspections.
- Review and prepare bulletins and change orders.
- Monitor project costs.
- Prepare construction punchlist.
- Compile all closeout documentation for the WV Department of Natural Resources

## SITE/CIVIL

As needed, CDI/L.R. Kimball will gather and review information regarding the project site. Based on a preliminary review of the project site, we will review flood plain mapping, new topographical, utility, and boundary survey information, easements and right of way information, and existing geotechnical, environmental/wetland reports, and retaining wall information, if available. Utilizing this information, we will work with the client and the project architect to determine the building facilities needed for the project and their operations.

We will also gather information on parking requirements, ingress/egress movements, truck sizes and requirements, grades or slope requirements, and utility requirements. We will gather local zoning, land development, and stormwater management ordinances to determine setbacks, parking requirements, buffers, etc. that may be required for the project. We will also contact utility companies to determine existing facility locations and capacities. We will develop a conceptual site plan layout or layouts incorporating the information and present the plan(s) to the client for review. The conceptual site plan(s) will also incorporate preliminary elevations and new geotechnical information or environmental reports.

Comments from the client will be incorporated into the conceptual site plan until a preferred site plan is determined. As the project progresses, the agreed upon conceptual site plan will be further developed and reviewed by local and state agencies, utility companies, and the project team. Comments will be incorporated into the plan set and the drawings will be further refined to provide specific details needed for construction. Internal plan reviews will be conducted prior to agency submittals and prior to bidding. Teleconferences and meetings will be held throughout the development of the site plans to further coordinate the various disciplines and incorporate further client comment and questions.



*Pipestem State Park Amphitheater  
Pipestem, West Virginia  
Photo Credit: [www.wvstateparks.com](http://www.wvstateparks.com)*



*Hawks Nest Lodge  
Ansted, West Virginia  
Photo Credit: [www.wvstateparks.com](http://www.wvstateparks.com)*

**SECTION III - FORMS/ADDITIONAL INFORMATION**



State of West Virginia  
 Expression of Interest  
 Architect/Engr

Procurement Folder : 464302

Document Description : A/E Services for Structural Repairs at Various State Parks

Procurement Type : Agency Contract - Fixed Amt

Date Issued	Solicitation Closes	Solicitation No	Version	Phase
2018-06-27	2018-08-02 13:30:00	AEOI 0310 DNR1800000009	1	Draft

SUBMIT RESPONSES TO:	VENDOR
BID RESPONSE DIVISION OF NATURAL RESOURCES PROPERTY & PROCUREMENT OFFICE 324 4TH AVE SOUTH CHARLESTON WV 25303-1228 US	<b>Vendor Name, Address and Telephone</b> CDI-Infrastructure, LLC dba L.R. Kimball 615 West Highland Avenue Ebensburg, PA 15931 814-419-7898

**FOR INFORMATION CONTACT THE BUYER**

Angela W Negley  
 (304) 558-3397  
 angela.w.negley@wv.gov

Signature X

FEIN # 27-2620523

DATE July 25, 2018

All offers subject to all terms and conditions contained in this solicitation

ADDENDUM ACKNOWLEDGEMENT FORM  
SOLICITATION NO.: AEOI 0310 DNR1800000009

Instructions: Please acknowledge receipt of all addenda issued with this solicitation by completing this addendum acknowledgment form. Check the box next to each addendum received and sign below. Failure to acknowledge addenda may result in bid disqualification.

Acknowledgment: I hereby acknowledge receipt of the following addenda and have made the necessary revisions to my proposal, plans and/or specification, etc.

Addendum Numbers Received:

(Check the box next to each addendum received)

- |  |  |
|--|--|
| <input checked="" type="checkbox"/> Addendum No. 1 | <input type="checkbox"/> Addendum No. 6  |
| <input type="checkbox"/> Addendum No. 2            | <input type="checkbox"/> Addendum No. 7  |
| <input type="checkbox"/> Addendum No. 3            | <input type="checkbox"/> Addendum No. 8  |
| <input type="checkbox"/> Addendum No. 4            | <input type="checkbox"/> Addendum No. 9  |
| <input type="checkbox"/> Addendum No. 5            | <input type="checkbox"/> Addendum No. 10 |

I understand that failure to confirm the receipt of addenda may be cause for rejection of this bid. I further understand that any verbal representation made or assumed to be made during any oral discussion held between Vendor's representatives and any state personnel is not binding. Only the information issued in writing and added to the specifications by an official addendum is binding.

CDI-Infrastructure, LLC dba L.R. Kimball

Company

Authorized Signature

Date

July 25, 2018

NOTE: This addendum acknowledgment should be submitted with the bid to expedite document processing.

CDI-Infrastructure, LLC dba L.R. Kimball  
1000 ...  
...  
...